

About PARCO

Corporate Profile (As of February 28, 2019)

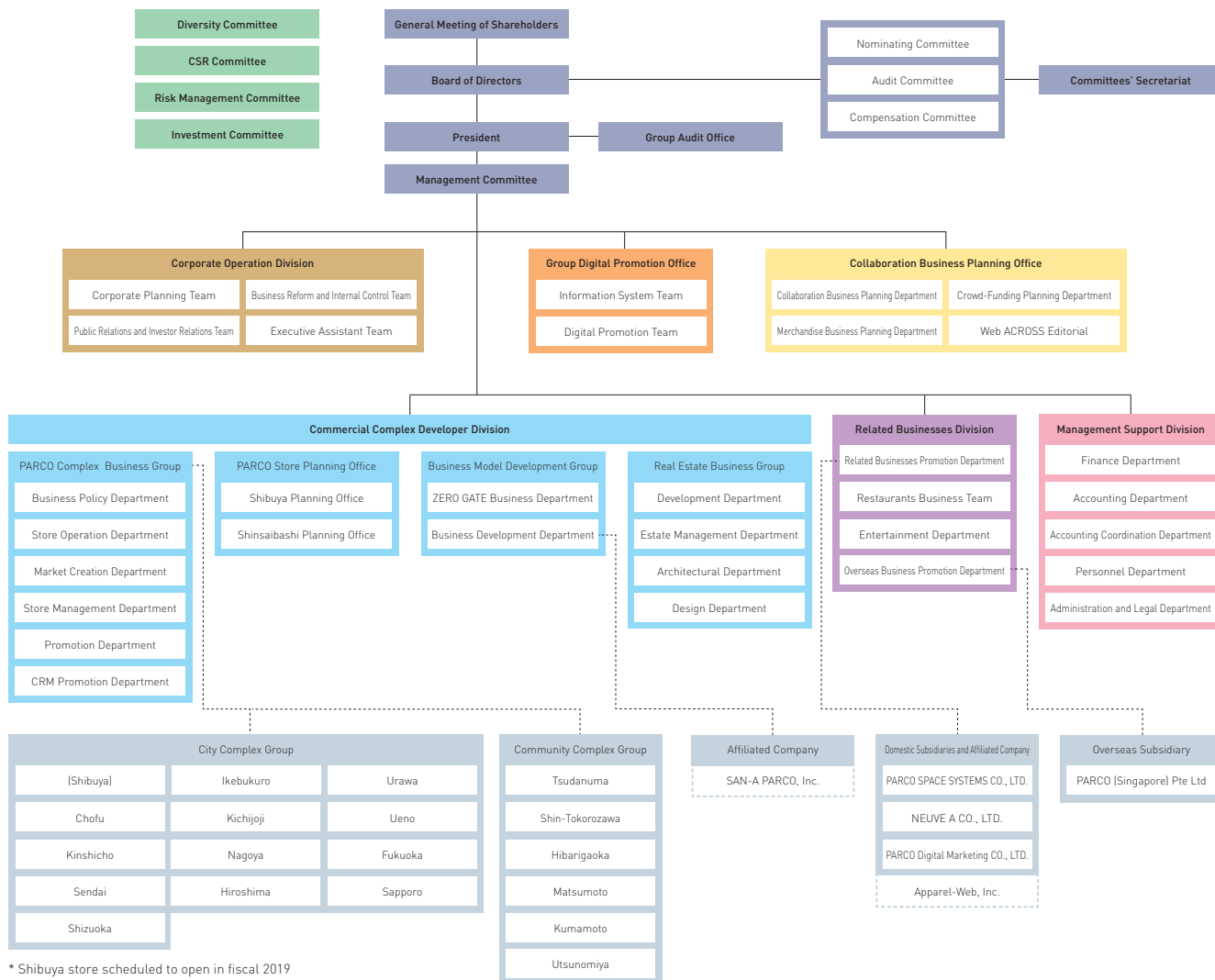
Company Name	PARCO CO., LTD.	Consolidated Operating Revenue	¥89,969 million (Fiscal 2018)
Headquarters	1-28-2 Minami-Ikebukuro, Toshima-ku, Tokyo 171-0022, Japan	Sales Floor Area	401,000 m ²
Head Office	Shibuya First Place Bldg. 8-16 Shinsen-cho, Shibuya-ku, Tokyo 150-0045, Japan	Tenants	2,035
Founded	February 13, 1953	Group Companies	NEUVE A CO., LTD. (Retail Business)
Paid-in Capital	¥34,367 million		PARCO SPACE SYSTEMS CO., LTD. (Space Engineering and Management Business)
Employees	651 (male 357, female 294)		PARCO Digital Marketing CO., LTD. (Digital Marketing Business)
Consolidated Employees	2,208		PARCO (Singapore) Pte Ltd (Southeast Asia Shopping Center Development)

Corporate History

1953	Feb.	Established Ikebukuro Station Building Co., Ltd.	1996	Apr.	Expanded floor space of Matsumoto PARCO
1954	Oct.	With the capital participation of Marubutsu Co., Ltd., the company shifted operations from the management of the Ikebukuro Station Building to the operation of department stores	1997	Mar.	Opened Utsunomiya PARCO
1957	May	Changed company name to Tokyo Marubutsu Co., Ltd.	1998	Nov.	Opened Nagoya PARCO South Building
	Dec.	Started operation of department store under the name Tokyo Marubutsu	2000	Mar.	Established PARCO-CITY CO., LTD.
1963	Jul.	Tokyo Marubutsu Co., Ltd. became a registered stock with the Osaka Securities Dealers Association		Sept.	Merged SEIDENKO CO., LTD. and PARCO ROMOTION CO., LTD.; adopted new corporate name of PARCO SPACE SYSTEMS CO., LTD.
1969	Jun.	Tokyo Marubutsu closed; commenced preparations for the establishment of the PARCO store	2001	Jun.	NEUVE A CO., LTD. started operations
	Nov.	Opened Ikebukuro PARCO		Sept.	Opened Hiroshima PARCO New Building
1970	Apr.	Changed company name to PARCO CO., LTD.	2002	Apr.	Opened Shibuya ZERO GATE
1973	Jun.	Opened Shibuya PARCO	2003	May	Adopted "Company with Committees System" (later renamed "Company with Three Committees" System)
		Opened PARCO Theater (former Seibu Theater)	2005	Feb.	Opened Pedi SHIODOME
1975	Aug.	Opened Sapporo PARCO	2006	Mar.	Credit card PEC Card renamed as PARCO Card
1977	Jul.	Opened Tsudanuma PARCO	2007	Mar.	Opened Shizuoka PARCO
1980	Sept.	Opened Kichijoji PARCO		Oct.	Opened Urawa PARCO
1981	Sept.	Opened Shibuya PARCO PART 3	2008	Aug.	Opened Sendai PARCO
1983	Jun.	Opened Shin-Tokorozawa PARCO	2010	Mar.	Opened Fukuoka PARCO
1984	Aug.	Opened Matsumoto PARCO	2011	Apr.	Complex format of Shibuya ZERO GATE changed
1986	May	Opened Kumamoto PARCO	2013	Apr.	Opened Shinsaibashi ZERO GATE
1987	Jan.	Stock listed on the 2nd Section of the Tokyo Stock Exchange		Oct.	Opened Dotonbori ZERO GATE
1988	Jun.	Opened Shibuya CLUB QUATTRO (former QUATTRO by PARCO)		Oct.	Opened Hiroshima ZERO GATE
	Aug.	Stock listed on the 1st Section of the Tokyo Stock Exchange	2014	Oct.	Opened Nagoya ZERO GATE
	Sept.	Established PARCO PROMOTION CO., LTD.		Nov.	Opened Fukuoka PARCO New Building
1989	Apr.	Launched PEC Card	2015	Mar.	Expanded floor space of Fukuoka PARCO
	May	Opened Chofu PARCO			Opened Nagoya PARCO midi
	Jun.	Opened Nagoya PARCO	2016	Feb.	Opened Sapporo ZERO GATE
1991	Sept.	Acquired stake in SEIDENKO CO., LTD.		Jul.	Opened Sendai PARCO2
	Nov.	Established PARCO (Singapore) Pte Ltd		Aug.	Temporarily closed Shibuya PARCO (PART 1, PART 3) for redevelopment
1993	Oct.	Opened Higarigaoka PARCO		Sept.	Opened Hiroshima ZERO GATE2
1994	Mar.	Opened Ikebukuro P'PARCO	2017	Mar.	Changed company name from PARCO-CITY CO., LTD. to PARCO Digital Marketing CO., LTD.
	Apr.	Opened Hiroshima PARCO		Nov.	Opened PARCO_ya Ueno
					Opened Kyoto ZERO GATE
			2018	Mar.	Opened Harajuku ZERO GATE
				Sept.	Opened Sannomiya ZERO GATE
			2019	Mar.	Opened Kinshicho PARCO

Organization Chart (As of March 31, 2019)

To realize the PARCO Group's Long-term Vision, we will promote our Medium-term Business Plan (FY2017-2021) and provide distinctive value in the form of inspirations, personal fulfilment, contentment, new lifestyles and more to consumers seeking their own fully satisfying brand of urban living through our three main social roles of "Incubation," "Urban Revitalization," and "Trends Communication."



* Shibuya store scheduled to open in fiscal 2019

Commercial Complex Developer Division

Consisting of the PARCO Complex Business Group, PARCO Store Planning Office, Business Model Development Group, and Real Estate Business Group, the division promotes the evolution of the real estate business as a producer of spaces for conducting stores business reforms and rebuilding the PARCO brand.

Related Business Division

Consisting of the Related Business Promotion Department, Restaurants Business Team, Entertainment Department, and Overseas Business Promotion Department, the division strengthens coordination with the PARCO stores business and works to prepare a foundation for related businesses.

Management Support Division

Consisting of the Finance Department, Accounting Department, Accounting Coordination Department, Personnel Department, and Administration and Legal Department, the division aims to strengthen functions that support growth and increase productivity throughout the overall PARCO Group.

Corporate Operation Division

Consisting of the Corporate Planning Team, Business Reform and Internal Control Team, Public Relations and Investor Relations Team, and Executive Assistant Team, the division promotes policies for maximizing corporate value by drafting business strategy and strengthening external communications, while also conducting business structure reforms and adding coordinating functions to internal controls. It also coordinates operations for promoting ESG.

Group Digital Promotion Office

Consisting of the Information System Team and Digital Promotion Team, the office coordinates the Group's overall ICT strategy, such as converting businesses to the omni-channel strategy, promoting business management reforms that utilize ICT, researching evolving technologies and providing support for the introduction of those technologies. The office also maintains close ties with the CRM officer of each Group company and strengthens functions for strategic information collection and analysis.

Collaboration Business Planning Office

Consisting of the Collaboration Business Planning Department, Crowd-Funding Planning Department, Merchandise Business Planning Department, and Web ACROSS Editorial, the office will work through a team comprised of internal and external members to expand the value of the PARCO Group's content and stimulate innovation, aiming to create new business through M&As and alliances and collaborations with partners in and outside the Group.

Stock Information (As of February 28, 2019)

Number of shares authorized	320,000,000
Number of shareholders	30,447
Number of shares issued and outstanding	101,462,977

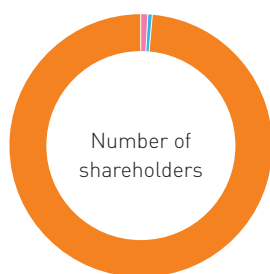
Stock Listings	The Tokyo Stock Exchange 1st Section
Independent Auditor	KPMG AZSA LLC

Principal Shareholders

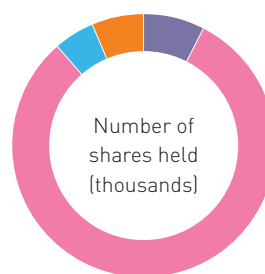
Name	Number of shares held (thousands)	Shareholding ratio (%)
J. FRONT RETAILING Co., Ltd.	65,922	64.98
Aeon Co., Ltd.	8,272	8.15
Credit Saison Co., Ltd.	7,771	7.66
Japan Trustee Services Bank, Ltd. (Trust Account)	3,571	3.52
MUFG Bank, Ltd.	930	0.92
BARCLAYS BANK PLC A/C CLIENT SEGREGATED A/C PB CAYMAN CLIENTS	906	0.89
Japan Trustee Services Bank, Ltd. (Trust Account 9)	758	0.75
UBS AG London Asia Equities	631	0.62
The Master Trust Bank of Japan, Ltd. (Trust Account)	614	0.61
J.P. MORGAN BANK LUXEMBOURG S.A. 1300000	589	0.58

* Shareholding ratios are calculated after deduction of treasury stock (5,771 shares).

Breakdown of Shares by Type of Shareholder

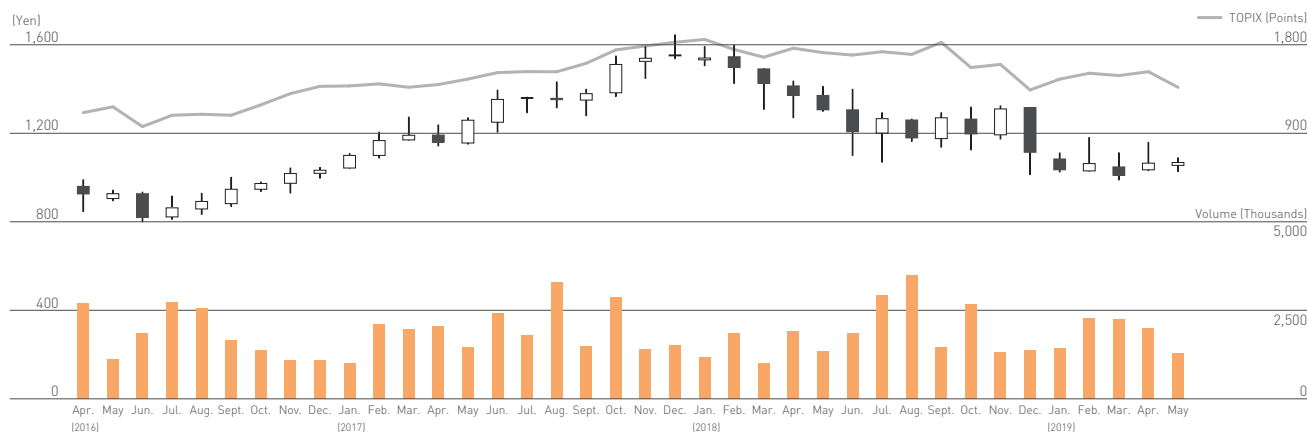


Japanese financial institutions and Japanese securities companies	47	0.2%
Other Japanese companies	291	1.0%
Foreign investors	166	0.5%
Japanese individuals and others	29,942	98.3%
Treasury stock	1	0.0%



Japanese financial institutions and Japanese securities companies	7,752	7.6%
Other Japanese companies	82,220	81.0%
Foreign investors	5,099	5.0%
Japanese individuals and others	6,384	6.3%
Treasury stock	5	0.0%

Stock Performance



Information on PARCO's Website



Store and Entertainment Information (Japanese)

www.parco.jp

Information is presented on PARCO stores, entertainment and more in an appealing manner using the latest Web functions.



About PARCO

www.parco.co.jp/en/

The website offers an intuitive introduction to PARCO Group business data, such as corporate and investor relations information, news releases, and information on our corporate social responsibility (CSR) activities.

There is also a PARCO Group Information Blog where we post the latest information



FACTBOOK 2019

Detailed management indicators can be found here.

Investor Relations

www.parco.co.jp/en/ir/

IR News		IR news and other timely disclosures are posted here.
Management policy		Visit here for Message from the President, Corporate Governance, Long-term Vision, Medium-term Business Plan, Business Risk, and Disclosure Policy.
Financial Data		Visit here for graphs of operating revenue, operating profit and other key financial indicators, with data downloadable in PDF and Excel formats.
IR Documents	Financial Results	Check here for disclosure of quarterly financial results.
	FACTBOOK	The FACTBOOK provides disclosure of detailed information including key indicators on a consolidated and non-consolidated basis and an itemized breakdown of sales by category.
	Financial Reports	Supporting materials from financial presentations are disclosed here.
	Results of Major Companies of PARCO Group	Here we disclose trends in business results for Group companies.
	Quarterly Report	PARCO's quarterly reports distributed to investors are posted here.
	Integrated Report	PARCO's latest Integrated Report is available in downloadable PDF and E@BOOK formats.
IR Calendar		View schedules for announcements of financial results and other events.
Stock and Bond Information	Stock Information	View information on PARCO's current principal shareholders and related matters.
	Guide to Shareholders	View various procedures, etc., related to shares.
	Shareholder Returns	View our dividend policy, dividends, and acquisition of treasury shares.
	Shareholder Rewards	Details concerning shareholder rewards can be viewed here.
	General Meeting of Shareholders	Convocation notices of the general meetings of shareholders can be viewed here.
	Stock Price Information	Information on PARCO's stock price is presented via Bloomberg.
Promotion of ESG Initiatives		View information on ratings and bonds here.
		View information on our environmental, social, and corporate governance activities.

Sustainability

www.parco.co.jp/en/csr/

View for an introduction to sustainability initiatives by the PARCO Group.

The President's CSR Message, PARCO's Fundamental CSR Policy, and CSR activities are reported here.

